

# Novelio® Decoration

Stylish, paintable wallcoverings



FIRE RESISTANT



CLEAN  
AIR



IMPACT  
RESISTANT

## For enduringly more beautiful and healthier living spaces

ADFORS Novelio® Decoration wallcoverings are paintable, and being made of glass fibre: last a long time without scuffing and scratching, and capture the imagination to their original designs. Free of any PVC, comprising entirely from natural materials, they allow the walls breathe. What's more, using CleanAir technology keeps the air in your rooms fresh and clean for longer.

| PAINTABLE  | Finish | Type     | Weight           | Roll size | Rolls/Pallet | Quantity/Pallet |
|------------|--------|----------|------------------|-----------|--------------|-----------------|
|            |        |          | g/m <sup>2</sup> | m x m     | pcs          | m <sup>2</sup>  |
| DECORATION |        | GV9004SF | 200              | 10,5 x 1  | 20           | 210             |
|            |        | GV9006SF | 390              | 10,5 x 1  | 20           | 210             |
|            |        | GV9007SF | 240              | 10,5 x 1  | 20           | 210             |
|            |        | N0062    | 225              | 30 x 1    | 24           | 720             |
|            |        | N0530    | 220              | 30 x 1    | 24           | 720             |
|            |        | N0550    | 220              | 30 x 1    | 24           | 720             |
|            |        | N0560    | 220              | 30 x 1    | 24           | 720             |
|            |        | N0700    | 225              | 30 x 1    | 24           | 720             |
|            |        | N0710    | 220              | 30 x 1    | 24           | 720             |
|            |        | N0720    | 220              | 30 x 1    | 24           | 720             |
|            |        | N0730    | 210              | 30 x 1    | 24           | 720             |
|            |        | N4860    | 250              | 30 x 1    | 24           | 720             |
|            |        | N4866    | 250              | 30 x 1    | 24           | 720             |
|            |        | N4870    | 250              | 30 x 1    | 24           | 720             |
|            |        | N4875    | 230              | 30 x 1    | 24           | 720             |
|            |        | N4895    | 230              | 30 x 1    | 24           | 720             |
|            |        | T9101SF  | 300              | 10,5 x 1  | 20           | 210             |
|            |        | T9102SF  | 270              | 10,5 x 1  | 20           | 210             |
|            |        | T9103SF  | 320              | 10,5 x 1  | 20           | 210             |
|            |        | T9104SF  | 320              | 10,5 x 1  | 20           | 210             |



GV9006SF



GV9007SF



N0062



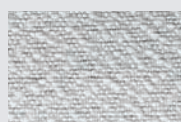
N0550



N0560



N0700



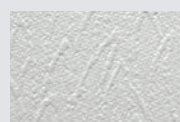
N0710



N0720



N0730



N4860



N4866



N4870



N4875



N4895



T9101SF



T9103SF



T9104SF

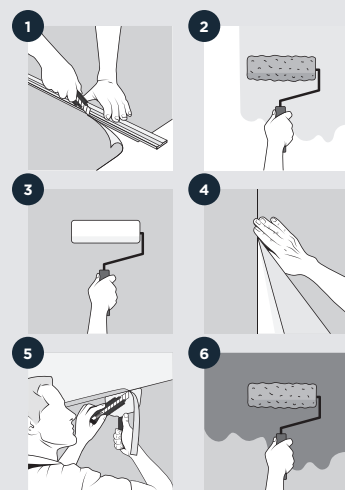
[www.adfors.com](http://www.adfors.com)

### Instructions

The wall must be clean (no dust, dirt or grease), dry, even and primed. Temperature should not be below 8 °C.

1. Cut to length according to room height (+10 cm).
2. Apply the dispersion adhesive evenly on the wall using a roller (-200 g/m<sup>2</sup>).
3. Place the wallcovering panel on the wall vertically and smooth it with a soft plastic roller.
4. Place the adjacent panel edge to edge (respect vertical pattern repeat). Clean excess of glue at the joint with a clean tissue. Repeat steps 1, 2, and 3 with other panels until you have finished the room.
5. Cut off any surplus with a knife.
- 6a. Dual tone products (sand coated) - Apply a 1st layer of acrylic paint when the product is dry (-1 day).
- 6b. Apply a 1st layer of acrylic paint when the product is dry (-1 day). Apply a 2nd layer of acrylic paint when the product is dry (-1 day).

The glass fibre fabric is carefully checked before leaving our factory but should also be checked again just before hanging. Any claim should be accompanied with roll label and a sample featuring the defect.



**SAINT-GOBAIN**

**SAINT-GOBAIN ADFORS CZ s.r.o.**

Sokolovská 106

570 21 Litomyšl • Czech Republic

Tel. : +420 461 651 111, +420 461 651 231

[www.adfors.com](http://www.adfors.com)